



Wheatstone Project LNG Plant

Tony Hey

Bechtel Oil, Gas and Chemicals, Inc.

June 22, 2010

Agenda



- Bechtel Introduction
- Site Location
- Wheatstone Project LNG Plant FEED Schedule
- LNG Plant Scope and Quantities
- Execution Strategy and Modularization
- Procurement and Sub Contracts
- Project Connect – Register your Interest
- Summary

Bechtel Introduction



Bechtel Perth office

- Tony Hey Manager Government & Public Affairs
- Alvin Ramcheran Sub Contracts & Procurement
- Chris Walker Permit Coordinator
- Bob Lamplough Employee Relations Manager

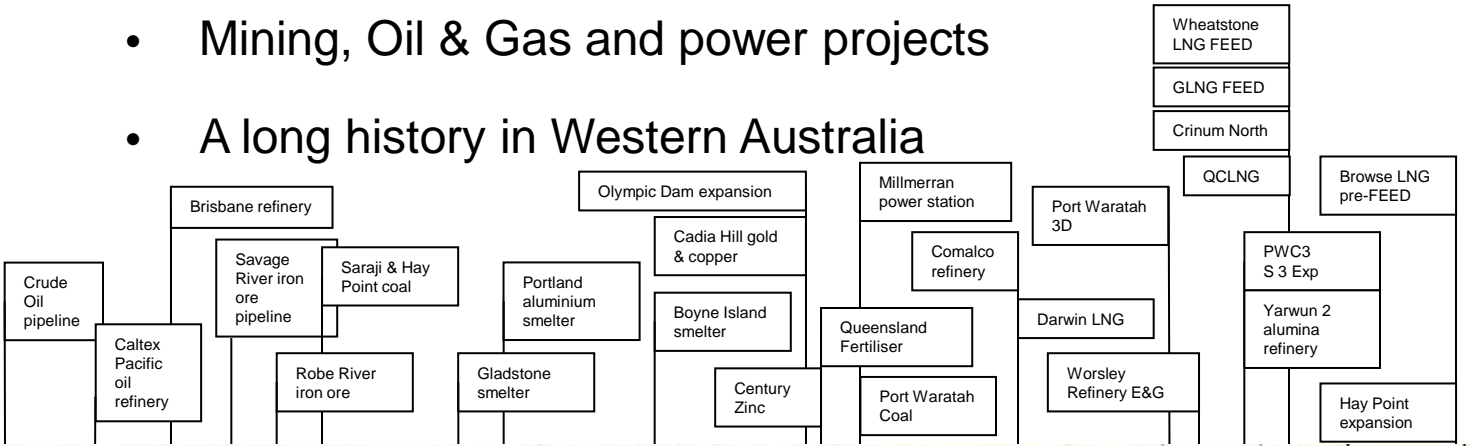


Bechtel Houston office

250 people

Bechtel Australian Experience

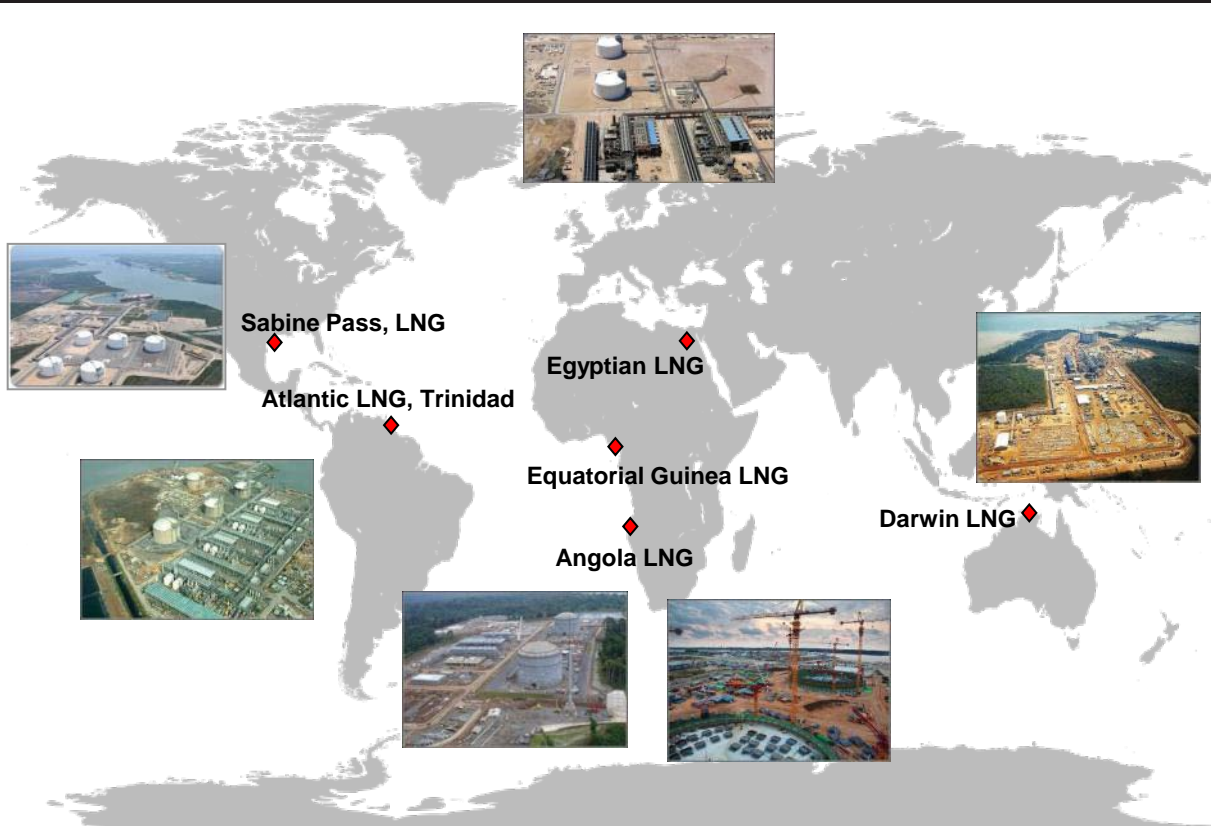
- Over 55 years Australian experience
- Mining, Oil & Gas and power projects
- A long history in Western Australia



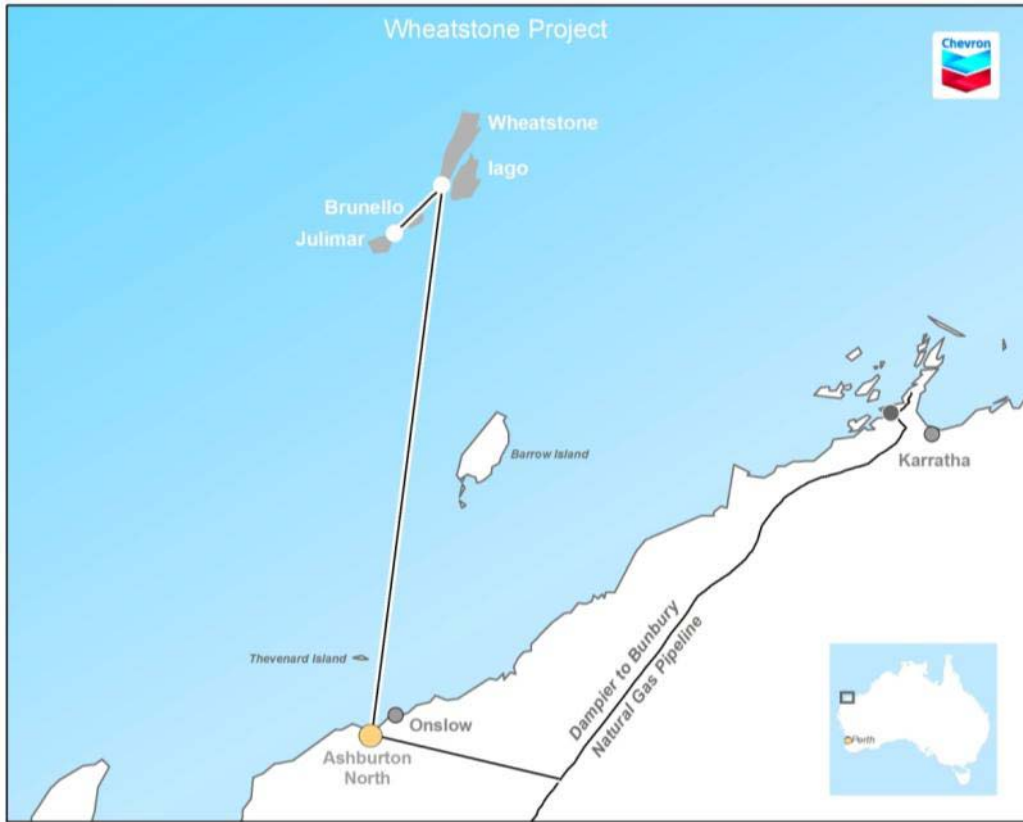
1950s 1960s 1970s 1980s 1990s 2000s 2010s



Bechtel Global LNG Experience



Site Location



- 225km from Wheatstone field
- 210km from Karratha (direct)
- 330km from Karratha (road)



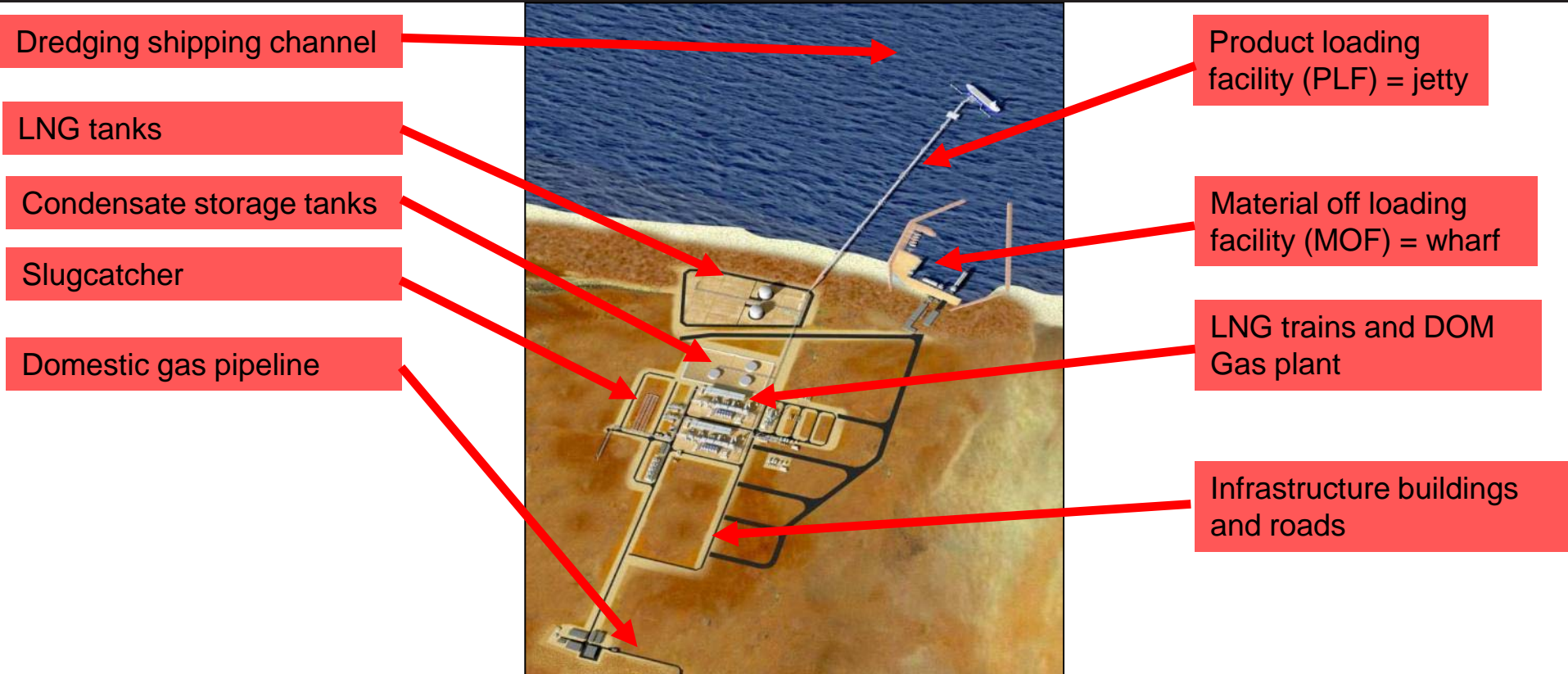
Site Location



- 12km from Onslow (direct)
- 32km from Onslow (new road)
- Construction camp to be 20km from Onslow



LNG Plant Major Scope Components



Quantities - Indicative

- Structural Steel 41,000 tonnes
- Bulk Pipe 150,000 m
- Pipe Spools 14,000 no.
- Reinforcing Steel 10,000 tonnes
- Prefabricated Electrical Substations 12 each



Execution Strategy



- Mix of sub contracts and self perform work
- Optimal balance between these two is to be determined during FEED phase
- Execution designed to create reliable outcomes and best value to Chevron

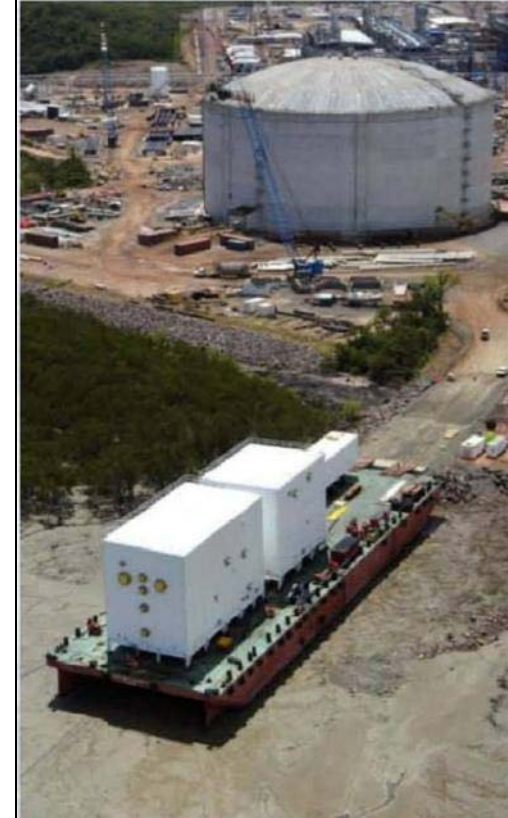


Modularization



Modules identified in FEED

- 161 modules
- 91,000 tonnes
- Heaviest module: 3,800 tonnes
- Longest: 85m
- Widest: 34m
- Tallest: 31m



Procurement and sub-contracts to date



- ICNWA engaged December 2009
- ProjectConnect launched May 2010
- Prequalification process underway—questionnaires and selection
- 22 major sub contract packages released for pricing to prequalified bidders to date
- 21 major purchase orders packages released for initial pricing to approved suppliers to date



REGISTER FOR SUPPLY OPPORTUNITIES

Current Projects Available for Ingham LNG Project

Click the link project of interest below:

- Whitstone Project - Whitstone Platform Procurement
- Whitstone Project - Onshore LNG Plant Procurement
- Whitstone Project - Onshore LNG Plant Subcontracts

Project Name: Whitstone Project - Onshore LNG Plant Subcontracts

Description: The Chevron-operated Whitstone LNG and associated gas plant PFEI work scope has been awarded to Bechtel O&M, Inc. and Chemtreat, Inc. The project is a process development of a gas plant to treat natural gas from the Browse Gasfield in Western Australia. The project will consist of new liquid natural gas (LNG) production train, domestic gas (DNG) processing plant, and condensate processing facilities, with supporting utilities, product storage, product loading facility (PLF), industrial offloading facility (IOF) and other infrastructure.

The feed gas will be coming from gas fields located off the Northwest Coast of Western Australia in the Gerneral Basin. Condensate will also be produced. The gas supply will be processed on the Processing Platform (PP) and delivered to landfill at the industrial North site as a subsea pipeline.

The Ingham LNG Project entered the final engineering and design phase in July 2009 and expects to make a final investment decision in 2011. Chevron is the operator and holds an approximately 75 percent interest in the project.

Goods & Services required for this project:

Items include P&ID, MECHANICAL, CIVIL, ELECTRICAL, INSTRUMENTATION, and other information on drawings, tenders in the contract or tender register. You will be able to add these information on your page. To view information click on the PDF icon. If required you can download tenders by clicking here.

Project Packages	SELL PACKAGE DESCRIPTION	REGISTRATION CLOSURE	PDF PACKAGE	COMPLETION OF PACKAGE	REGISTERED SUPPLIER
ICP-001	SELL PACKAGE DESCRIPTION	10/01/10	[PDF]	[X]	[X]
ICP-002	Construction Power Generation (4.00 MWh)	10/01/10	[PDF]	[X]	[X]
ICP-003	Site Survey Services (2.00 MWh)	10/01/10	[PDF]	[X]	[X]
ICP-004	Truckers (Transport) (4.21 MWh)	0/0/2010	[PDF]	[X]	[X]
ICP-005	Plant Loading and Risk Transfer (4.79 MWh)	0/0/2010	[PDF]	[X]	[X]
ICP-006	Security Services (3.85 MWh)	10/01/10	[PDF]	[X]	[X]
ICP-007	Site Services (4.00 MWh)	00/0/2010	[PDF]	[X]	[X]
ICP-008	Transport (4.12 MWh)	00/0/2010	[PDF]	[X]	[X]
ICP-009	Instrumentation & Control Services (3.88 MWh)	10/01/10	[PDF]	[X]	[X]
ICP-010	Construction Jetties, Wharves, Buildings and Utilities (4.00 MWh)	10/01/10	[PDF]	[X]	[X]
ICP-011	Mobile Installation (4.00 MWh)	10/01/10	[PDF]	[X]	[X]

Procurement Packages - Indicative



Equipment	Material
Packaged and Prefabricated Substations	Bulk Pipe
Compressors	Platform & Ladder Steel
Heat Exchangers	Reinforcing Steel
Generators	Structural Steel
Pumps	Line Pipe
Vessels	Insulation
Valves	Cable
Potable Water Treatment System	Electrical Cable Tray

Sub-contract Packages - Indicative



Design & Construct	Construct Only	Services
Marine Material Offloading Facility	Site Preparation	Construction Village Operations & Catering
Product Loading Facilities	Permanent & Temporary Fencing	Medical Services
Marine Breakwater	145kV Cable & Hardware Supply & Installation	Air Services
Construction Jobsite Modular Building & Utilities	Concrete Batch Plant & Aggregate Supply	Security Services
Construction Village Buildings	Piling Installation	Bus Services
LNG Storage Tanks	Pipe Rack Module Fabrication	Non-destructive Examination
Condensate Storage Tanks	Marine Dredging	Waste Management Services

Procurement and Contracts – Going Forward



- Prequalification process – ongoing
- Release pricing enquiries for further estimating from July – August 2010
- Final submission of prices from suppliers and sub contractors to support FEED estimate August – October 2010



Summary



- Register your interest for Wheatstone Project Onshore LNG Plant: www.projectconnect.com.au

- Follow up your registration with:

- Tony Hey Manager Government and Public Affairs
- Alvin Ramcheran Sub Contracts and Procurement Rep
- Perth Office
Level 5/ 16 Milligan St
Perth WA 6000

08 6140 1100

BENEFITS OF PROJECTCONNECT FOR THE WHEATSTONE PROJECT

ProjectConnect provides suppliers and contractors with an understanding of the Wheatstone Project work scopes that are soon to be tendered or are already out to bid. PDFs attached to the Wheatstone Project packages provide information on the scope of work involved and may assist suppliers and contractors to better position themselves for work at the first tier (full package) or lower tier (components of package) levels.

Companies registered under Wheatstone eNews will be advised on Project progress via the regular Project electronic newsletter.

Wheatstone Project information and work packages on ProjectConnect are maintained by Wheatstone contracts and procurement personnel.

These personnel are able to access the specific package registrations and company profiles to assist in the identification of potential suitable Australian companies for invitation to prequalify.

The first tier registrations on the specific packages are reviewed by Industry Capability Network Western Australia (ICNWA), together with information from other sources of industry capability, in providing advice directly to the Wheatstone Project team on potential Australian suppliers and contractors.

Bidders and successful contractors for Wheatstone Project work packages are also encouraged to utilise ICNWA to obtain similar advice on potential Australian sub contractors and suppliers. ICNWA reviews the components of package registrations (again in conjunction with other sources) in providing that advice.

Upon award of a contract, the name and contact details of the successful contractor are published on ProjectConnect to further facilitate contact with Australian industry. Companies registered on ProjectConnect at the part package level are automatically sent this information about the package for which they have registered. The successful contractor may also be given access to the components of package registrations for their work package.

- How to use ProjectConnect [CLICK HERE](#)
- How to register your company's capabilities on ProjectConnect [CLICK HERE](#)
- Industry Capability Network of Western Australia [CLICK HERE](#)



Register Your Interest



- Register your interest on Wheatstone Project LNG Plant – ICNWA and ProjectConnect
- Lists of major procurement and sub contract packages
- Scope descriptions posted progressively on ProjectConnect
- Register where you have capability
- Prequalification process handled by the Project



Way Forward



- Contact ICNWA and register your interest on ProjectConnect
- Chevron will provide Full, Fair & Reasonable opportunity - bids need to be competitive
- Keep monitoring ProjectConnect for Tier 2 and Tier 3 opportunities
- Thank you for attending