



Gorgon Project Briefing
Rick Robinson
Director Perth Operations
Kellogg Joint Venture

Perth, November 27 2008

Operated by Chevron Australia
in joint venture with



Downstream Scope – LNG Plant



- 3 x 5 mtpa LNG processing trains using APCI technology
- 2 x 180,000 m³ LNG Storage tanks
- 4 x 35,000 m³ Condensate Tanks
- Condensate separated from gas stream and exported separately
- Gas treatment, CO₂ removal, compression and reinjection
- 300 Tj/day Domestic Gas processing plant
- 5 x 118 MW gas–turbine power generation units.
- Modular Construction

Downstream Scope - Infrastructure

- 2.1 km long Materials Offloading Facility and Causeway
- 1.9 km long LNG Jetty, with two loading berths
- Site preparation & civil works
- Dredging of navigable channel
- Construction Village and Initial Fly Camp
- WAPET Landing development
- Plant utilities, services and telecommunications
 - Water Treatment
 - Waste Disposal
 - Power
 - Diesel Supply
 - Communications
- Temporary construction facilities

Downstream Scope - Other

■ Logistics

- Mainland and BWI Supply Bases
- Tugs and Barges
- Ro-Ro Vessel
- Freight Forwarding
- Personnel movements to and from BWI

■ Quarantine

- Quarantine Management
- Inspection Operations
- Training

Downstream Challenges



- The protection of Barrow Island's environment
 - Class 'A' Nature Reserve
- Creating and maintaining the Incident & Injury Free safety culture
- Timely delivery of materials and equipment
- Cost and schedule
- Minimising re-work and flawless start-up

Contract Packages - Indicative

Design & Construct	Construct Only	Off-Site Preassembly	Services
LNG Tanks	Site Preparation	Modules	Heavy Lift & Transportation - BWI
Condensate Tanks	Civil & Underground Services	Pre-assembled Racks	Facilities Management
Construction Village	Dredging & Pioneer MOF	Pre-assembled Units	Supply Base Operation
Buildings	Painting & Insulation		RoRo Vessel
Tank Refurbishment	Buildings		Tugs & Barges
LNG Jetty & Marine Structures	Electrical & Instrumentation		Medical
Telecomms & Electronic Systems	Mechanical, Process & Plant Utilities		Waste Management
	CO ₂ Pipeline		Security
	WAPET Landing		Commissioning
			Catering & Camp Operations

Procurement Packages - Indicative

Material	Material	Material
Air Coolers	Pipe	Maintenance Equipment
Pressure Vessels	Pipe Supports	Welding Equipment & Consumables
Heat Exchangers	Fittings	Personal Protection Equipment
Pumps	Electrical Cable	Scaffolding
Compressors	Instrument Cable	Vehicles
Power Generation	Instruments	Small Tools
Water Treatment	DCS and ESD Systems	Office Equipment
Electric Motors	Telecommunications Equipment	Steel Plate and Sections
Engineering Bulk Materials	Switchgear	Cement, Sand, Aggregate and Rock
Control Valves	GT Power Generation	Fuel
Switchrooms & Substations	Marine Loading Arms	IT Networks / LAN / WAN

Downstream Requests for Quotation 2008 – Currently in the Market



Work Package Title	
SEAWATER INTAKE SUBMARINE CABL	DIESEL FILTERS
LV SWITCHGEAR	PERMANENT REVERSE OSMOSIS UNIT
33KV SWITCHGEAR	PERMANENT W/W TREATMENT PACKAGES
RING MAIN UNITS	BRIDGING WATER TREATMENT
POWER GENERATION TRANSFORMERS	SEA CONTAINERS (INITIAL)
DISTRIBUTION TRANSFORMERS	FLEXIBLE CONCRETE BLOCK MATS
CONTROL SYSTEM PACKAGE	SATN – TOWERS & STRUCTURES
CONTROL & SHUTDOWN VALVES	LOGISTICS CONTAINER FORKLIFT
VEHICLES FOR SUPPLY BASES	LOGISTICS CRANES – LEASE
TRAILERS (INITIAL)	LOGISTICS DUNNAGE (INITIAL)
UTILITIES API 650 TANKS	CONSTRUCTION VILLAGE LPG
TEMP DIESEL STORAGE & DIESEL	CONSTRUCTION SITE VEHICLES
TEMPORARY WATER TANKAGE	PASSENGER BUS
DIESEL PUMPS	CONSTRUCTION SUPPORT BUSES
ESSENTIAL DIESEL GENERATORS	

Downstream ITB's and Contracts 2008

– Expected by 31 Dec 08



Work Package Title	
OFFPLOT PREFABRICATED SUSTATI	DATA CENTRE IT INFRASTRUCTURE
TEMP TRANSPORTABLE BUILDINGS	SATN – MICROWAVE LINKS (INIT)
AC & DC UPS SYSTEMS	MONITORED FIRE DETECTION
UTILITIES WATER PUMPS	NETWORK MANAGEMENT SYSTEMS
SEA WATER SUPPLY PUMPS	CONSOLE SYSTEM & DIGITAL VOICE
TPS DIESEL GENERATOR PACKAGE/S	COMMUNICATION SHELTERS – INITIAL
DOWNSTREAM NAVIGATION AIDS	IT EQUIPMENT (INITIAL)
FIRE APPLIANCES	FREIGHT FORWARDING – DOMESTIC
AMBULANCE	LOGISTICS CONTAINER STANDS
TEMPORARY WASTEWATER INJ	LOGISTICS TRAILER ACCESS PLATF
TELEPHONY SYSTEMS	WAREHOUSE RACKING AND SHELVING
VHF TACTICAL RADIO SYSTEM	VEHICLE WASH BAY
LAN/WAN (INITIAL)	

■ The key is to access opportunities via ProjectConnect

www.projectconnect.com.au

Operated by Chevron Australia
in joint venture with



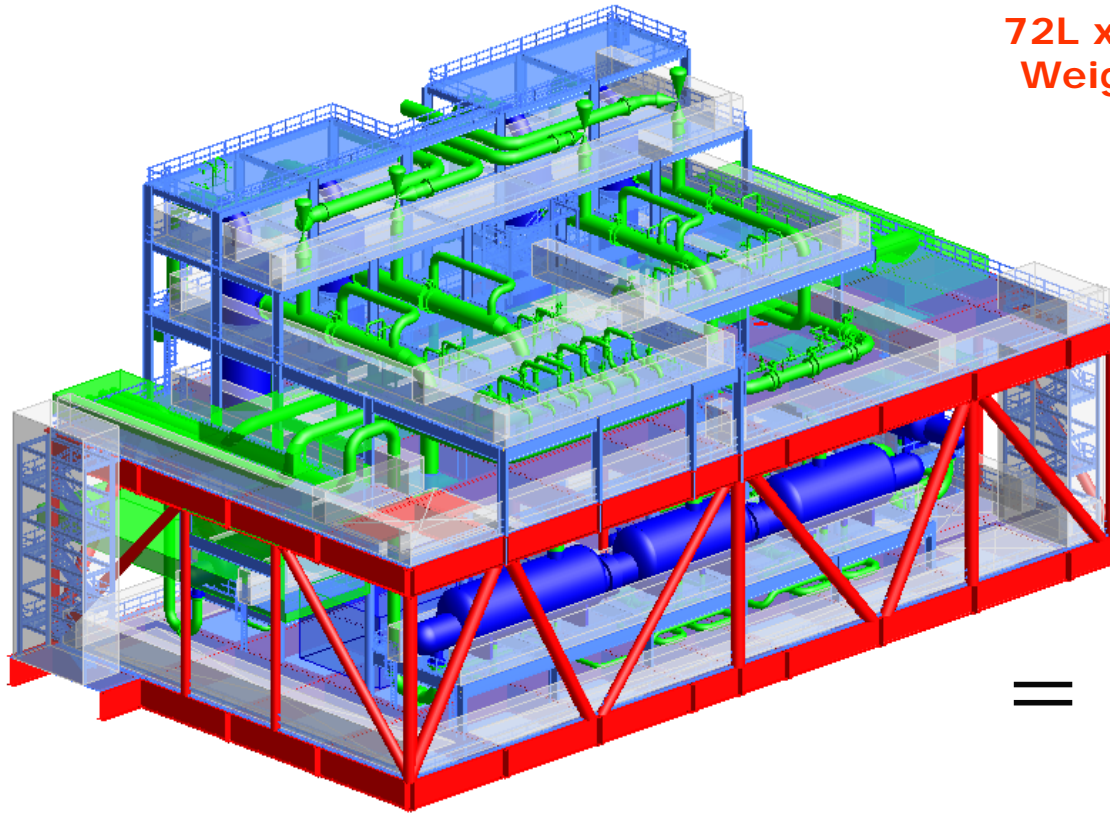
Material Quantities - Indicative

Material	Quantities (Scale of Works)
Major Equipment Count	1,000
Bulk Earthworks	Excavation - 6.5 million m ³ Backfill - 2.0 million m ³ MOF Fill - 2.3 million m ³
Piling Steel Sections	15,000 tonnes
Concrete	190,000 m ³
Rock Armour	50,000 tonnes
Pre-cast Concrete Armour	300,000 tonnes
Dredging	7.6 million m ³
Electrical & Instrument Cable	2,100 km
Insulation & Painting	300,000 m ²

Modularisation - Indicative

Material	Quantities (Scale of Works)
No. of Modules	50
No. of PAUs & PARs	270
Modules	180,000 tonnes
PARs	40,000 tonnes
PAUs	20,000 tonnes
Largest Module (weight)	7,000 tonnes
Largest Module (dimensions)	40m wide x 35m high x 72m long

Refrigeration Module Concept



72L x 40W x 35H metres
Weight = 7,000 tonnes

=



3835 Holden
Commodores

Operated by Chevron Australia
in joint venture with

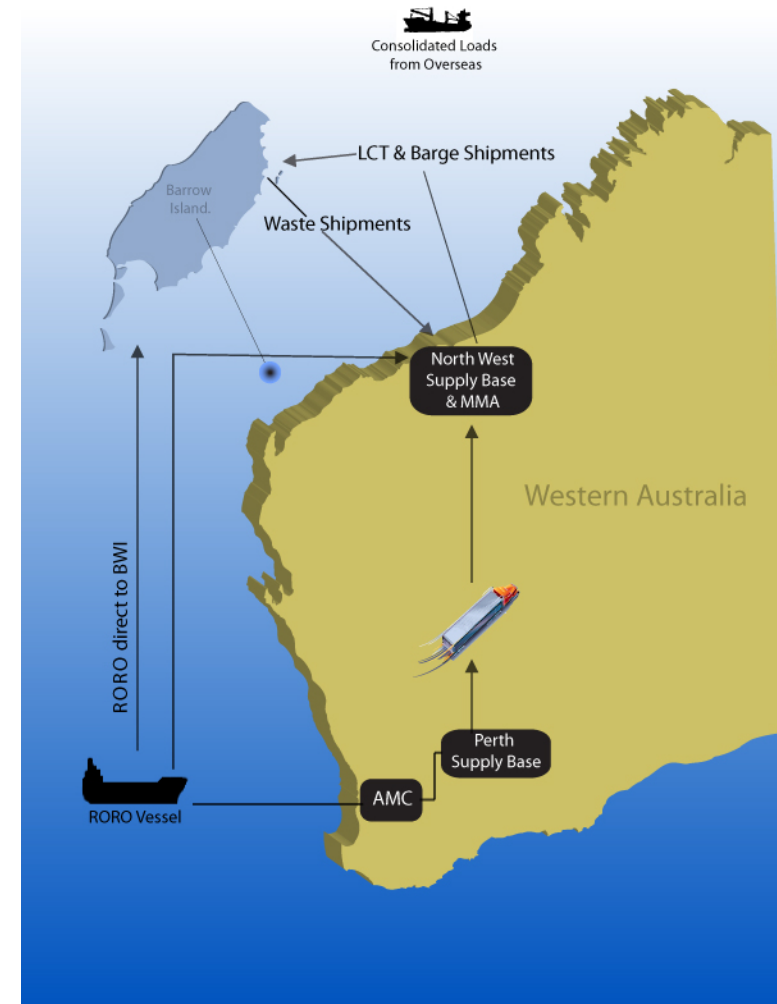
Logistics & Materials Movements

- 2 Mainland supply bases

- Perth & Dampier

- Key Activities

- Quarantine
- Road Transport
- Heavy Lift, Cranes & Storage
- Marine cargo vessels
- Air Transport
 - ▶ People
 - ▶ Cargo



Summary

- KJVG is committed to working with Australian companies that can help us build a world class, safe and competitive project.
- KJVG is providing suppliers and contractors with information to enable them to identify opportunities and establish a competitive position
- ProjectConnect provides the best mechanism for industry to communicate with, and register for, the Gorgon Project.

www.projectconnect.com.au

Project Packages

REF NO.	FULL PACKAGE DESCRIPTION	REGISTRATION CLOSES	FULL PACKAGE	COMPONENTS OF PACKAGE	TENDERERS / SUPPLIER
7850002	Construction Village (156.68 kb)	15/12/2007	<input type="checkbox"/>	<input type="checkbox"/>	
7850009	Barrow Island Warehousing and Logistics (156.44 kb)	15/12/2007	<input type="checkbox"/>	<input type="checkbox"/>	
7850011	Telecommunication and Electronic Systems (159.20 kb)	30/12/2007	<input type="checkbox"/>	<input type="checkbox"/>	
7850052	Site Preparation (158.43 kb)	30/12/2007	<input type="checkbox"/>	<input type="checkbox"/>	
7850013	Fly Camp on Barrow Island (37.38 kb)	1/2/2008	<input type="checkbox"/>	<input type="checkbox"/>	
7850003	Permanent Utilities (157.00 kb)	1/3/2008	<input type="checkbox"/>	<input type="checkbox"/>	
78500100	Module Transportation - Land and Sea (40.10 kb)	6/5/2008	<input type="checkbox"/>	<input type="checkbox"/>	
78500090	Catering and Camp Services (136.98 kb)	16/5/2008	<input type="checkbox"/>	<input type="checkbox"/>	

Projectconnect website